



Slotted End Fittings

More quality options for all of your hose assembly needs



Slotted end fittings offer a wide variety of ID sizes in standard or non-standard dimensions. Their slotted ends allow for clamping to attach the metal hose assembly.

Features

- ① 304 Stainless Steel, nominal .049
- ② Uniform O.D. single diameter based on I.D.
- ③ Slots available in standard and non-standard configuration
- ④ Standard and non-standard lengths available

Slotted ends are designed as another weld on option. The ends are designed to fit over mating fitting. The slots allow for clamping to attach the metal hose assembly. AMFM slotted ends are manufactured for exhaust and other nominal pressure applications.

- Ready to weld light weight assembly
- Wide variety of ID sizes in standard or non-standard dimensions
- Stainless construction suitable for high temperature metal hose applications

Part Number Description

S 4 - 301 - S 3 SS



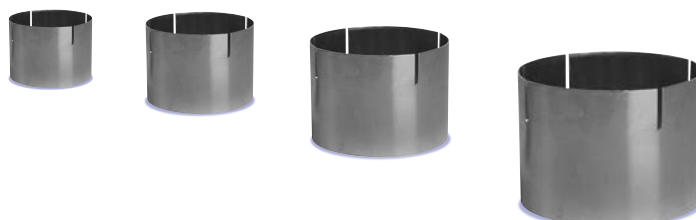
Code	Fraction (Inches)	Code	Fraction (Inches)
01	1/16	09	9/16
02	1/8	10	5/8
03	3/16	11	11/16
04	1/4	12	3/4
05	5/16	13	13/16
06	3/8	14	7/8
07	7/16	15	15/16
08	1/2	16	No fraction

1 Product Code
S = Slotted End
SC = Custom Slotted End

2 Slot Info
 2 = 2 slots/std.
 4 = 4 slots/std.

Slotted End Specifications

Feature	Detail	2" ID and Lower	2 1/2" ID and Above
Material	Standard weight 304 SS	304 Stainless Steel	
Wall	Wall thickness is based on standard material for standard applications.	Nominal (.049)	
O.D.	This is a reference size resulting from the manufactured ID and wall thickness. Any part sizing by this dimension must result from customer specification using custom specification.	A reference dimension, unless requested using a custom specification.	
ID Fit Size	Parts are sized to fit over the mating fitting. Parts are manufactured to the plus tolerance of the specified size. Slotted Ends are designed to reduce ID from external clamp onto mating part.	Manufactured +/- 1/32" tolerance. Closer tolerance in standard and custom available.	Manufactured + 1/16" tolerance. Sizing increments specified in 1/16" to 1/8" increments.
Slots	SW Slot Width	Slots are available in standard configuration	
	SD Slot Depth	Standard 1/8" width (+/- 1/32")	
	SS Slot Spacing	Slots set at recommended depths for standard parts shown in chart. Depth can be specified to alternate dimensions reflecting custom specification. Standard depth will allow fitting to provide required ID reduction.	1/2" standard through 2" (+/- 1/64")
Length	Slots are spaced based on the number of slots specified allowing for spacing in equal increments. This also is in response to the required amount of typical ID reduction.	2 slots standard equal 180 degree spacing.	4 slots standard equal 90 degree spacing
		Part length specified to accommodate interface of the mating fitting with slotted end, with non-slotted portion to accommodate attachment and required transition length.	Smaller diameters usually require shorter lengths with parts in this range not available in lengths over 6". See standard profiles (+/- 1/8")





- 3 Part ID**
First digit
Whole inch
Second/third digits
fractional designation
(See code to left)
- 4 Material Weight**
S = Standard
- 5 Length**
Length/Inches
- 6 Material Type**
SS = 304 Stainless
Steel

Standard Profile Availability

Part Number	Standard I.D.	Availability			
		3"	4"	6"	Above 6"
S4-201-S (length) SS	2 1/16" (2.063")	•	•		
S4-209-S (length) SS	2 9/16" (2.563")	•			
S4-301-S (length) SS	3 1/16" (3.063")	•			•
S4-309-S (length) SS	3 9/16" (3.563")	•	•	•	•
S4-401-S (length) SS	4 1/16" (4.063")	•	•		•
S4-409-S (length) SS	4 9/16" (4.563")	•			•
S4-501-S (length) SS	5 1/16" (5.063")	•			•
S4-601-S (length) SS	6 1/16" (6.063")	•		•	•

Custom Configuration

Feature	Detail	2" ID and Lower	2 1/2" ID and Above
Material	Standard weight 304 SS	304 Stainless Steel	
Wall	As in material listing, (currently) standard weight material.	Nominal (.049)	
ID	Select ID based on diameter the slotted end is made to fit over. Slotted Ends can be supplied in a single ID only, multiple size units not available.	.030" to .050" over mating diameter	1/16"+ over mating diameter
Slots	<ul style="list-style-type: none"> Standard slot width (SW) (1/8") is typical, depending on application. Slot depth (SD) should consider the overlap of mating part and clamping configuration (also see length). Slots spacing (SS) based on ID of fitting, with each two slots allowing .080 of reduction (see ID). Odd amounts not recommended. 	Below 2" ID, two slots recommended	Use standard slots where possible, consult factory on variations.
Length	Overall length of the unit is determined length requirement of the fitting. Consider slots and attachment to flexible hose application and installation requirements.	Maximum length of 6" or less.	As required to 12".

Consult factory to evaluate your requirements.
AMFM Incorporated can stock slotted ends manufactured to custom specification