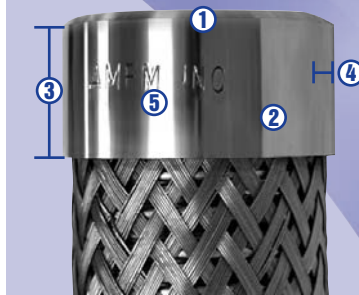
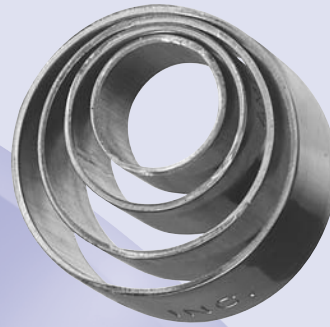




Solid Braid Bands

Adding quality
& efficiency
to metal hose
fabrication



Our unique manufacturing process offers the most economical production of braid bands supported with years of engineering experience behind the manufacturing of our products. Our products and services are designed around the needs of metal hose fabricators.

Features

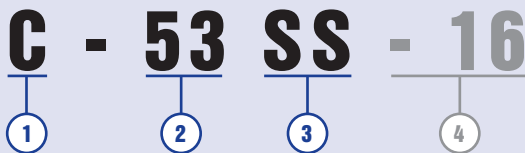
- ① **ID** - Manufactured to fit size Standard sizes every .015" for hose sizes 3/16" through 2"
- ② **Materials** - 304 & 316 Stainless Steel, Copper & Monel
- ③ **Width** - Available in standard & non-standard widths
- ④ **Thickness** - Heavier gauge and consistent wall thickness for easy welding
- ⑤ **Impression Branding** - Details SECTION V

Braid Bands are manufactured for hose sizes from 3/16" through 2", offering unlimited flexibility, band ID's range from .405" to 3.005". Quality braid bands manufactured to meet the requirements for your metal hose. Single braid, double braid, and braided braid.

A full range of standard materials is offered, including 304 and 316 Stainless Steel, Copper and Monel.

AMFM Incorporated manufactures standard and non-standard specification braid bands. Non-Standard widths allow you to specify collars to meet special requirements. AMFM Incorporated manufactures a full line of specialty bands that increase the capability of a standard braid band, details SECTION II SPECIALTY BANDS.

Part Number Description



① **Category**
"M" through "H"
See Detail Chart

② **Size Number**
1 through 167
(.405 through .3005 ID)
See Detail Chart

③ **Material Code**
SS = 304 SS
ST = 316 SS
C = Copper
M = Monel

Standard Sizes and Part Numbers

Category	Category & Size	ID [Fit Size]	Material				Category	Category & Size	ID [Fit Size]	Material				Category	Category & Size	ID [Fit Size]	Material				
			SS	ST	C	M				SS	ST	C	M				SS	ST	C	M	
M	M-1	.405	•				D	D-57	1.245	•	•			F	F-117	2.145	•				
	M-2	.420	•					D-58	1.260	•	•	•				F-118	2.160	•			
	M-3	.435	•					D-59	1.275	•	•	•				F-119	2.175	•			
	M-4	.450	•					D-60	1.290	•	•	•				F-120	2.190	•			
	M-5	.465	•					D-61	1.305	•	•	•				F-121	2.205	•			
	M-6	.480	•					D-62	1.320	•	•	•				F-122	2.220	•			
	M-7	.495	•					D-63	1.335	•	•	•				F-123	2.235	•			
	M-8	.510	•					D-64	1.350	•	•	•				F-124	2.250	•			
	M-9	.525	•			•		D-65	1.365	•	•	•				F-125	2.265	•			
	M-10	.540	•			•		D-66	1.380	•	•	•				F-126	2.280	•			
	M-11	.555	•			•		D-67	1.395	•	•	•				F-127	2.295	•			
	M-12	.570	•			•		D-68	1.410	•	•	•				F-128	2.310	•			
	M-13	.585	•			•		D-69	1.425	•	•	•				F-129	2.325	•			
	M-14	.600	•			•		D-70	1.440	•	•	•				F-130	2.340	•			
	M-15	.615	•			•		D-71	1.455	•	•	•				F-131	2.355	•			
	M-16	.630	•			•		D-72	1.470	•	•	•				F-132	2.370	•			
	M-17	.645	•			•		D-73	1.485	•	•	•									
A	A-18	.660	•	•	•	•	E	E-74	1.500	•		•		FX	FX-133	2.385	•				
	A-19	.675	•	•	•	•		E-75	1.515	•		•	•			FX-134	2.400	•			
	A-20	.690	•	•	•	•		E-76	1.530	•		•	•			FX-135	2.415	•	•		
	A-21	.705	•	•	•	•		E-77	1.545	•		•	•			FX-136	2.430	•	•		
	A-22	.720	•	•	•	•		E-78	1.560	•		•	•			FX-137	2.445	•	•		
	A-23	.735	•	•	•	•		E-79	1.575	•		•	•			FX-138	2.460	•	•		
	A-24	.750	•	•	•	•		E-80	1.590	•		•	•			FX-139	2.475	•	•		
	A-25	.765	•	•	•	•		E-81	1.605	•		•	•			FX-140	2.490	•	•		
	A-26	.780	•	•	•	•		E-82	1.620	•		•	•			FX-141	2.505	•	•		
	A-27	.795	•	•	•	•		E-83	1.635	•	•	•	•			FX-142	2.520	•	•		
	A-28	.810	•	•	•	•		E-84	1.650	•	•	•	•			FX-143	2.535	•	•		
	A-29	.825	•	•	•	•		E-85	1.665	•	•	•	•			FX-144	2.550	•	•		
	A-30	.840	•	•	•	•		E-86	1.680	•	•	•	•			FX-145	2.565	•	•		
	A-31	.855	•	•	•	•		E-87	1.695	•	•	•	•			FX-146	2.580	•	•		
B-32	.870	•	•	•	•	E-88	1.710	•	•	•	•		FX-147	2.595	•	•					
B-33	.885	•	•	•	•	E-89	1.725	•	•	•	•		FX-148a	2.610	•	•					
B-34	.900	•	•	•	•	E-90	1.740	•	•	•	•		FX-148b	2.625	•	•					
B-35	.915	•	•	•	•	E-91	1.755	•		•	•		FX-148c	2.640	•	•					
B-36	.930	•	•	•	•	E-92	1.770	•		•	•		FX-148d	2.655	•	•					
B-37	.945	•	•	•	•	E-93	1.785	•		•	•		FX-148e	2.670	•	•					
B-38	.960	•	•	•	•	E-94	1.800	•		•	•		FX-149a	2.685	•						
B-39	.975	•	•	•	•	E-95	1.815	•		•	•		FX-149b	2.700	•						
B-40	.990	•	•	•	•	E-96	1.830	•		•	•		FX-149c	2.715	•						
C	C-41	1.005	•	•	•	•	F-97	1.845	•		•		G	G-150	2.750	•					
	C-42	1.020	•	•	•	•	F-98	1.860	•		•	•			G-151	2.765	•				
	C-43	1.035	•	•	•	•	F-99	1.875	•		•	•			G-152	2.780	•				
	C-44	1.050	•	•	•	•	F-100	1.890	•		•	•			G-153	2.795	•				
	C-45	1.065	•	•	•	•	F-101	1.905	•		•	•			G-154	2.810	•				
	C-46	1.080	•	•	•	•	F-102	1.920	•		•	•			G-155	2.825	•				
	C-47	1.095	•	•	•	•	F-103	1.935	•		•	•			G-156	2.840	•				
	C-48	1.110	•	•	•	•	F-104	1.950	•		•	•			G-157	2.855	•				
	C-49	1.125	•	•	•	•	F-105	1.965	•		•	•			G-158	2.870	•				
	C-50	1.140	•	•	•	•	F-106	1.980	•		•	•			G-159	2.885	•				
	C-51	1.155	•	•	•	•	F-107	1.995	•		•	•									
	C-52	1.170	•	•	•	•	F-108	2.010	•		•	•			H	H-160	2.900	•		•	
	C-53	1.185	•	•	•	•	F-109	2.025	•		•	•				H-161	2.915	•		•	
	C-54	1.200	•	•	•	•	F-110	2.040	•		•	•				H-162	2.930	•		•	
C-55	1.215	•	•	•	•	F-111	2.055	•		•	•		H-163	2.945		•		•			
C-56	1.230	•	•	•	•	F-112	2.070	•		•	•		H-164	2.960		•		•			
						F-113	2.085	•		•	•		H-165	2.975		•		•			
						F-114	2.100	•		•	•		H-166	2.990		•		•			
						F-115	2.115	•		•	•		H-167	3.005	•		•				
						F-116	2.130	•		•	•										



4 Non-Standard Width

All widths other than standard are indicated in 1/16" increments (i.e.: - 4 = 1/4" width; - 10 = 5/8" width; - 22 = 1 3/8" width)

NOTE: Only required when width is NOT standard

See Width Notes

Braid Band Specifications

AMFM Incorporated Braid Bands are manufactured to a "Fit Size" reflecting the hose size the band ID is produced to accommodate. There are two methods of specification:

1. AMFM Standard Specification, designated by AMFM part number, fit size indicated in ID column of catalog.
2. Customer Part Number Control, see Production Control section of this catalog for details.

ID (Fit Size)

Braid Bands are manufactured to "Fit Size". Fit size can only be accurately determined at time of manufacture. Parts are subject to changes from handling, secondary operation, packaging and shipping. These changes do not affect the Fit Size for this intended use, unless the parts are mechanically deformed. Due to these minor dimension changes from handling, AMFM CANNOT provide parts to specific minimum or maximum dimensions, as it will cause limitation and incorrect Fit Size. Reference the Hose Sizing section (page 4) of this catalog for detail regarding properly sizing AMFM Incorporated braid bands.

STANDARD TOLERANCE: "Fit Size" + .010 / - .005

Standard Widths indicated below or Non-Standard Width as indicated by the part number. Non-standard widths are indicated as shown in the Part Number Description (Ⓞ). All usable widths can be supplied. Delivery is subject to non-standard lead times depending on the specific requirements. Many alternate widths are available in as standard stock. Any width can be made standard stock with ongoing demand. Parts manufactured by Customer Specification require width indication.

Width

Material	M	A	B	C	D	E	F	FX	G	H
SS, ST, M	.375	.500	.625	.625	.750	.750	.750	.750	.750	.750
C	.375	.500	.500	.625	.625	.750	1.00	--	--	--

STANDARD TOLERANCE: Overall Width: + .060 / - .060

AMFM Incorporated Braid Bands have standard wall thickness as reflected by the chart below.

Wall Thickness

Material	M	A	B	C	D	E	F	FX	G	H
SS, ST	.035	.049	.049	.049	.049	.049	.049	.049	.065	.065
C	.049	.049	.049	.055	.055	.055	.050	--	--	.068
M	--	.048	.037	.037	.037	.065	.065	--	--	--

STANDARD TOLERANCE: Varies by Materials +/- .0075 (max.)

Parts are produced in selected Standard Materials as indicated in charts.

Material

304 Stainless Steel	(SS)	ASTM 304 Stainless Steel (material certification available)
316 Stainless Steel	(ST)	ASTM 316 Stainless Steel (material certification available)
Copper	(C)	Alloy 122 Hard Cooper
Monel	(M)	Alloy 400 – M (material certification available)