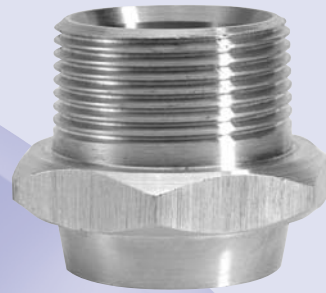




Weld End Fittings

Complete your
metal hose
assembly with
quality weld ends



To accompany or band
products AMFM Incorporated
offers quality weld end
components to complete
your fabrication requirements.



Thread One End Pipe Nipples

- ① Carbon Steel schedule 40 & schedule 80
- ② Stainless Steel schedule 80
- ③ Straight cut plain end ID reamed
OD champher
- ④ Pipe Size 1/4" through 6"
- ⑤ Multiple lengths offered all sizes

Hex Male Weld End Fittings

- ① Carbon Steel
- ② Stainless Steel
- ③ High quality machined bar stock
- ④ Hose size 1/4" through 2"
- ⑤ Carbon Steel
- ⑥ 304 & 316 Stainless Steel

PF - 16 - 3 SS

① ② ③ ④

① **Product Code**
PF = Pipe Fitting
HM = Hex Male

② **Fitting Size**
 -04 = 1/4" -20 = 1 1/4"
 -06 = 3/8" -24 = 1 1/2"
 -08 = 1/2" -32 = 2"
 -12 = 3/4" -48 = 3"
 -16 = 1" -64 = 4"

③ **Fitting Length**
 -3 = 1 1/2" -5 = 2 1/2"
 -4 = 2" -6 = 3"
Does NOT apply to Hex Male fittings

④ **Material Code**
 CS40 = Carbon Steel
 Schedule 40
 CS80 = Carbon Steel
 Schedule 80
 SS = 304 Stainless Steel
 ST = 316 Stainless Steel

Weld End Fittings

Pipe Fittings

Pipe Fittings		Availability										
Material Type	PF Length	-04	-06	-08	-12	-16	-20	-24	-32	-40	-48	-64
CS40	-3 (1 1/2")	•	•	•	•	•	•	•	•	•	•	•
	-4 (2")			•	•	•	•	•	•		•	
	-5 (2 1/2")			•	•	•	•	•	•	•	•	
	-6 (3")	•	•	•	•	•	•	•	•	•	•	•
CS80	-3 (1 1/2")				•	•	•	•	•			
	-4 (2")			•	•	•	•	•	•			
	-5 (2 1/2")			•	•	•	•	•	•			
	-6 (3")			•	•	•	•	•	•			
SS40	-3 (1 1/2")	•	•	•	•	•	•	•	•			
	-4 (2")			•	•	•	•	•	•			
	-5 (2 1/2")			•	•	•	•	•	•			

Hex Fittings

Hex Fittings	Availability								
Material Type	-04	-06	-08	-12	-16	-20	-24	-32	
CS40	•	•	•	•	•	•	•	•	
SS	•	•	•	•	•	•	•	•	
ST	•	•	•	•	•	•	•	•	



Part Specifications

PF Carbon Steel Schedule 40

Size	Overall Length	O.D.	Wall	Threads Per Inch	Thread Length
1/4	1.500	0.540	0.088	18	0.5946
1/4	2.000	0.540	0.088	18	0.5946
1/4	3.000	0.540	0.088	18	0.5946
3/8	1.500	0.675	0.091	18	0.6006
3/8	2.000	0.675	0.091	18	0.6006
3/8	3.000	0.675	0.091	18	0.6006
1/2	1.500	0.840	0.109	14	0.7815
1/2	2.000	0.840	0.109	14	0.7815
1/2	3.000	0.840	0.190	14	0.7815
3/4	1.500	1.050	0.113	14	0.7935
3/4	2.000	1.050	0.113	14	0.7935
3/4	3.000	1.050	0.113	14	0.7935
1	2.000	1.315	0.133	11 1/2	0.9845
1	3.000	1.315	0.133	11 1/2	0.9845
1 1/4	2.000	1.660	0.140	11 1/2	1.0085
1 1/4	2.500	1.660	0.140	11 1/2	1.0085
1 1/4	3.000	1.660	0.140	11 1/2	1.0085
1 1/2	2.000	1.900	0.145	11 1/2	1.0085
1 1/2	2.500	1.900	0.145	11 1/2	1.0085
1 1/2	3.000	1.900	0.145	11 1/2	1.0252
2	2.000	2.375	0.154	11 1/2	1.0582
2	2.500	2.375	0.154	11 1/2	1.0582
2	3.000	2.375	0.154	11 1/2	1.0582
2 1/2	2.500	2.875	0.203	8	1.5712
2 1/2	3.000	2.875	0.203	8	1.5712
3	2.500	3.500	0.216	8	1.6337
3	3.000	3.500	0.216	8	1.6337
4	4.000	4.500	0.237	8	1.7337

Pipe Fitting 304 Stainless Steel Schedule 40

Size	Overall Length	O.D.	Wall	Threads Per Inch	Thread Length
1/4	1.500	0.540	0.088	18	0.5946
3/8	1.500	0.675	0.091	18	0.6006
1/2	1.500	0.840	0.109	14	0.7815
1/2	2.000	0.840	0.109	14	0.7815
3/4	1.500	1.050	0.113	14	0.7935
3/4	2.000	1.050	0.113	14	0.7935
1	2.000	1.315	0.133	11 1/2	0.9845
1 1/4	2.000	1.660	0.140	11 1/2	1.0085
1 1/2	2.000	1.900	0.145	11 1/2	1.0252
1 1/2	2.500	1.900	0.145	11 1/2	1.0252
2	2.500	2.375	0.154	11 1/2	1.0582

PF Carbon Steel Schedule 80

Size	Overall Length	O.D.	Wall	Threads Per Inch	Thread Length
1/2	2.000	0.840	0.147	14	0.7815
1/2	3.000	0.840	0.147	14	0.7815
3/4	2.000	1.050	0.154	14	0.7935
3/4	3.000	1.050	0.154	14	0.7935
1	2.000	1.315	0.179	11 1/2	0.9845
1	3.000	1.315	0.179	11 1/2	0.9845
1 1/4	2.000	1.660	0.191	11 1/2	1.0085
1 1/4	3.000	1.660	0.191	11 1/2	1.0085
1 1/2	2.000	1.900	0.200	11 1/2	1.0085
1 1/2	2.500	1.900	0.200	11 1/2	1.0085
1 1/2	3.000	1.900	0.200	11 1/2	1.0085
2	2.000	2.375	0.218	11 1/2	1.0582
2	2.500	2.375	0.218	11 1/2	1.0582
2	3.000	2.375	0.218	11 1/2	1.0582
2 1/2	2.500	2.875	0.276	8	1.5712
2 1/2	3.000	2.875	0.276	8	1.5712
3	2.500	3.500	0.300	8	1.6337
3	3.000	3.500	0.300	8	1.6337
4	3.000	4.500	0.337	8	1.7337

Hex Fitting Specifications, All Material Types

Part	ID	Thread	Hex-Size	Thread Length	Hex Width	Overall Length
1/4	0.250	1/4-18	0.6250	0.500	0.300	1.200
3/8	0.375	3/8-18	0.6875	0.500	0.300	1.200
1/2	0.500	1/2-14	0.8750	0.700	0.400	1.500
3/4	0.750	3/4-14	1.0625	0.700	0.400	1.500
1	1.000	1-11-1/2	1.3750	0.925	0.400	1.750
1 1/4	1.250	1-1/4-11-1/2	1.7500	0.900	0.425	1.750
1 1/2	1.500	1-1/2-11-1/2	2.0000	1.000	0.475	1.900
2	2.000	2-11-12	2.5000	1.000	0.475	1.900

